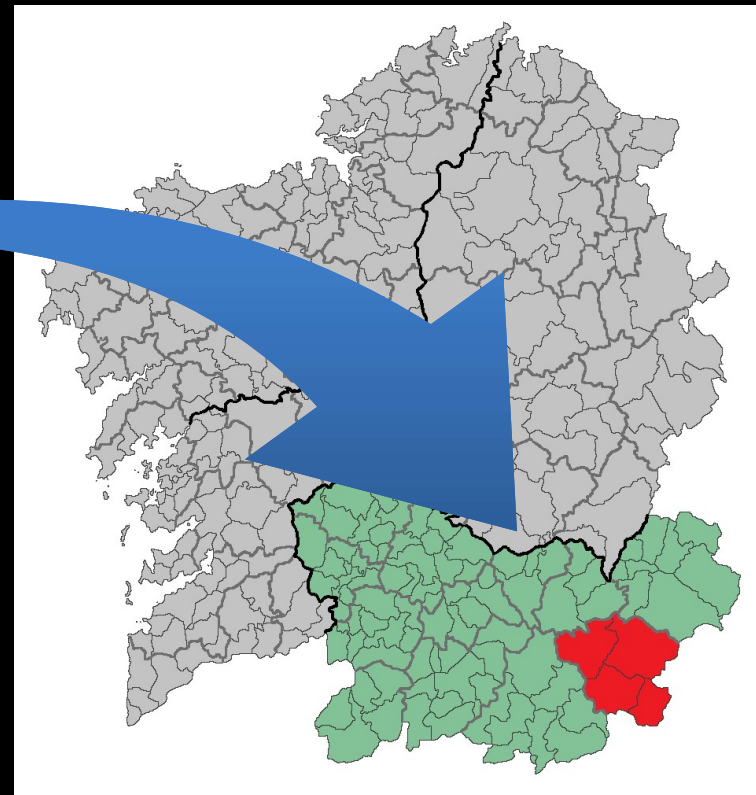




**the
CATTLE RAISING
EXTENSIVE
as
MANAGER
of the
TERRITORY**

MARIA PAEZ PEREZ
Zafra, May 29 to 31, 2019

District of Viana do Bolo



**WE, the LIVESTOCKERS, MAKE a
territory management creating a
SUSTAINABLE ENVIRONMENT**



and



**WE CONTRIBUTE to MITIGATE CLIMATE
CHANGE and REDUCE the EFFECTS of FIRE**

.....how?

To get started....



must RECOGN
IZE and
ASSUME
reality ...

Why....

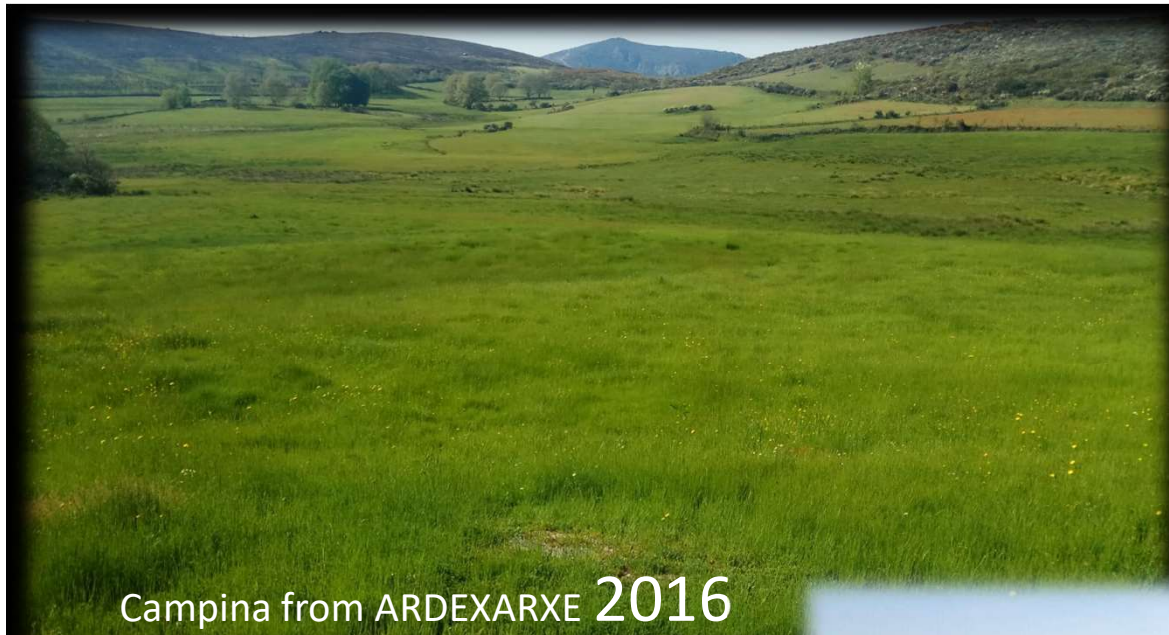
when from
one year to
another,
nature
teaches us
this ...



September
2015



September
2017



Campina from ARDEXARXE 2016

....Or
simply... when in
TWO consecutive
years we went
through the same
area ...

... and we
see this
LANDSCAPE

...



Campina from ARDEXARXE 2017

When missing
LIVESTOCK ACTIVITY ...



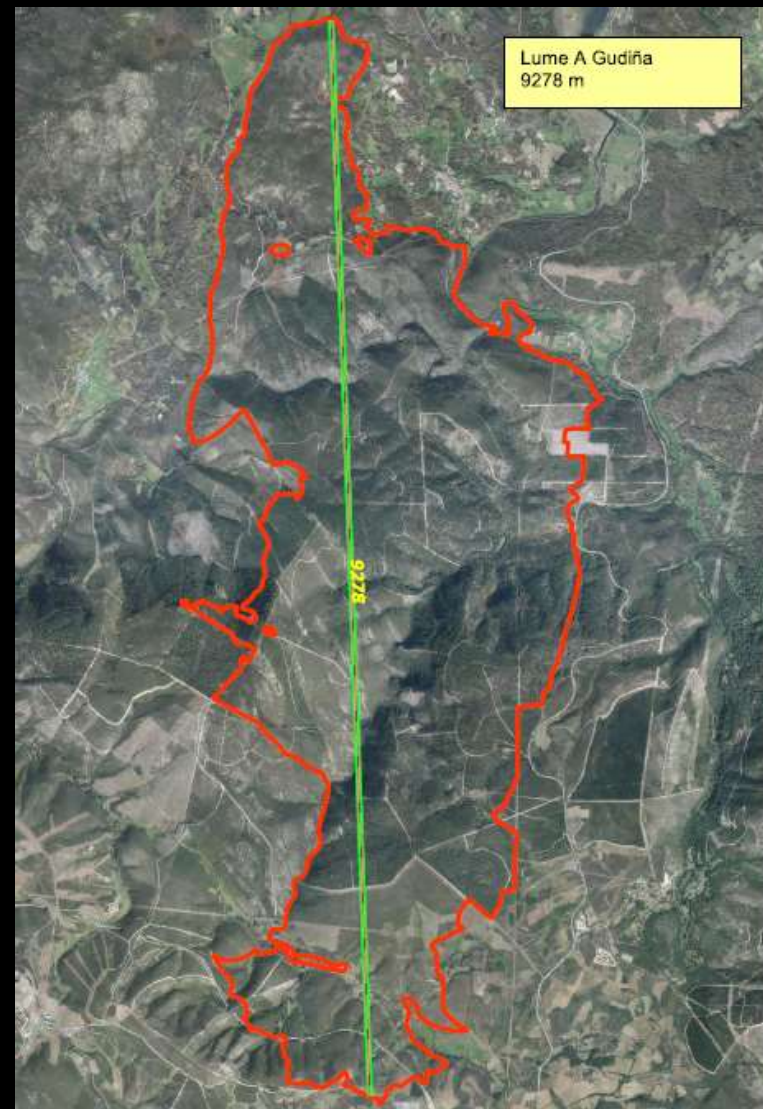
MOUNT GROWS ...



..... coming to
FIRES

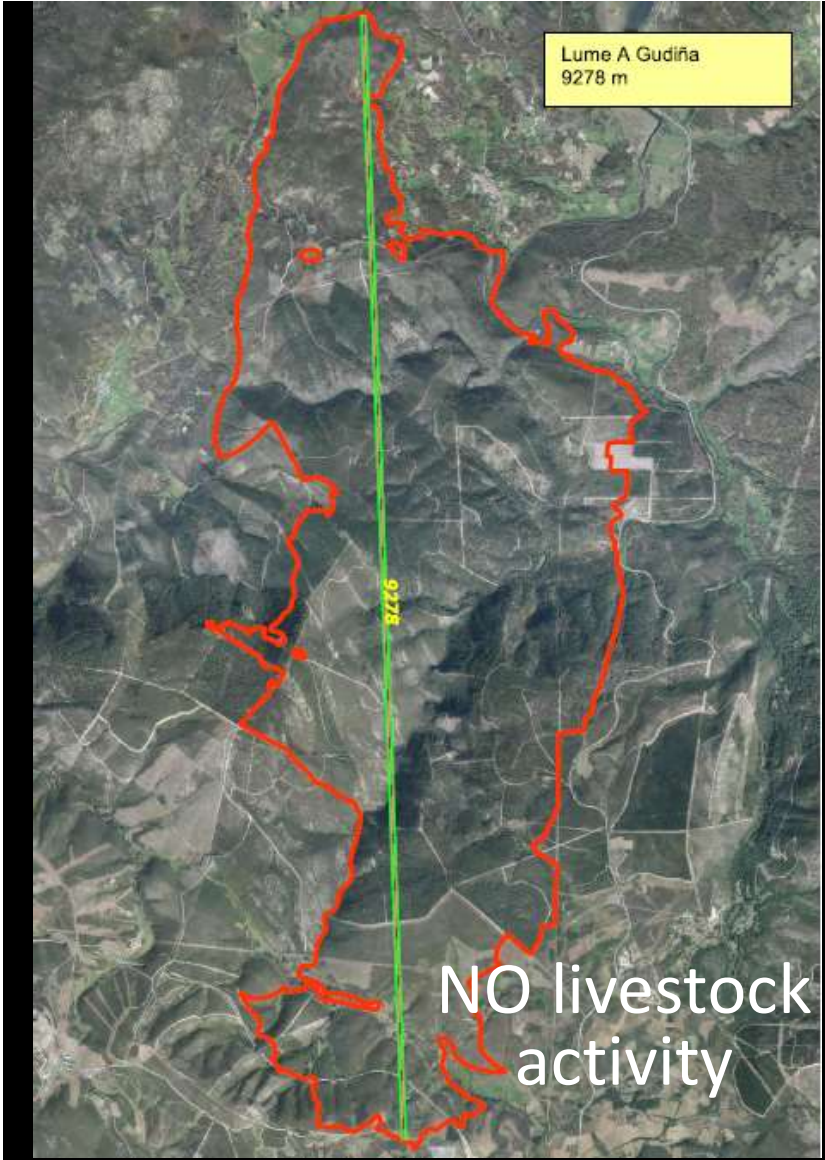


LACK OF
LIVESTOCK
ACTIVITY creates
CONTINUOUS
MOUNT = GREAT
FIRE DIMENSIONS

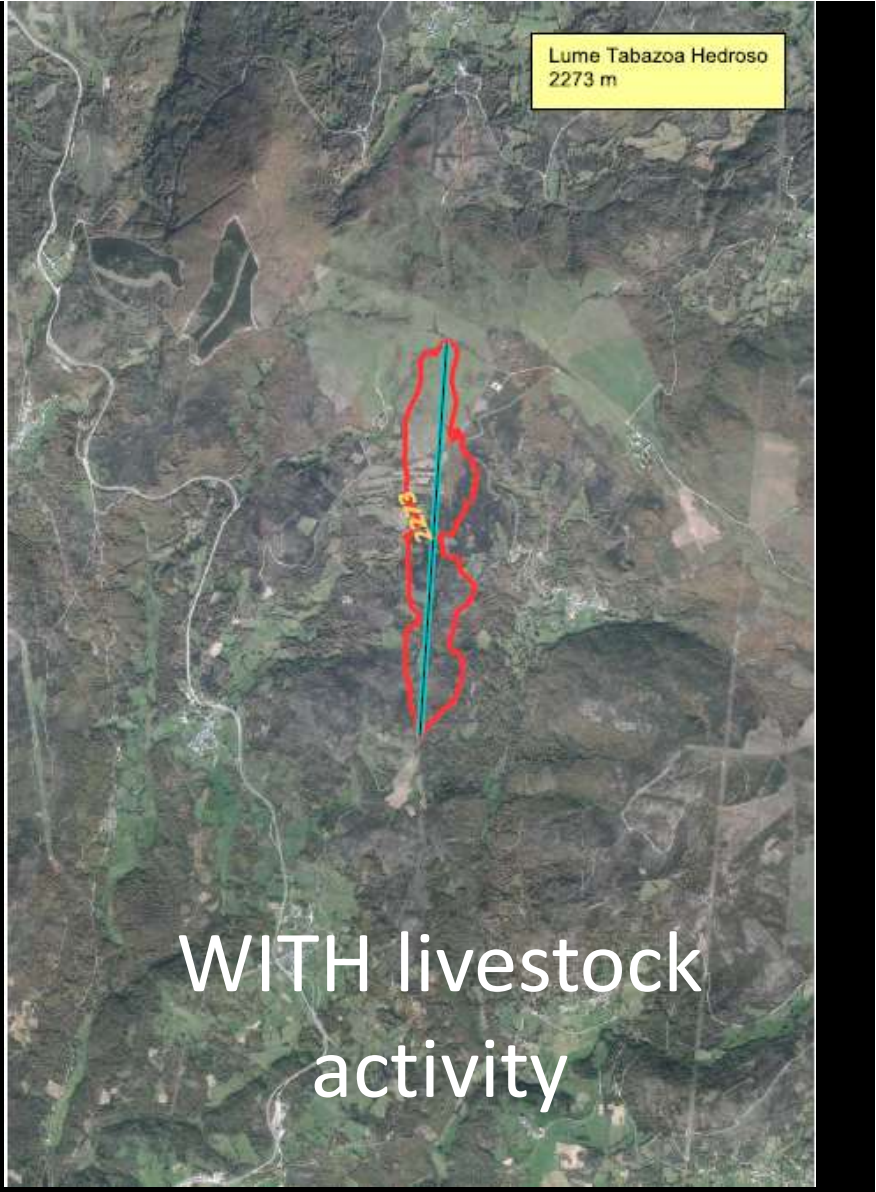


... on the contrary
when there is
**LIVESTOCK
ACTIVITY** it
becomes
**DISCONTINUOUS
MOUNT = FIRE
SMALL
DIMENSIONS**





≠



BIG Fires

NEGATIVE
influence on
CLIMATE CHANGE
and BIODIVERSITY





BIG Fires

Emissions IMPORTANT CO₂

...besides bringing us DESIRABLE
LANDSCAPES like this



... the diversification of uses creates
a discontinuity in the middle



Winning activity = DIScontinuity



SIN Livestock activity = continuity

CEPEDELO 2011

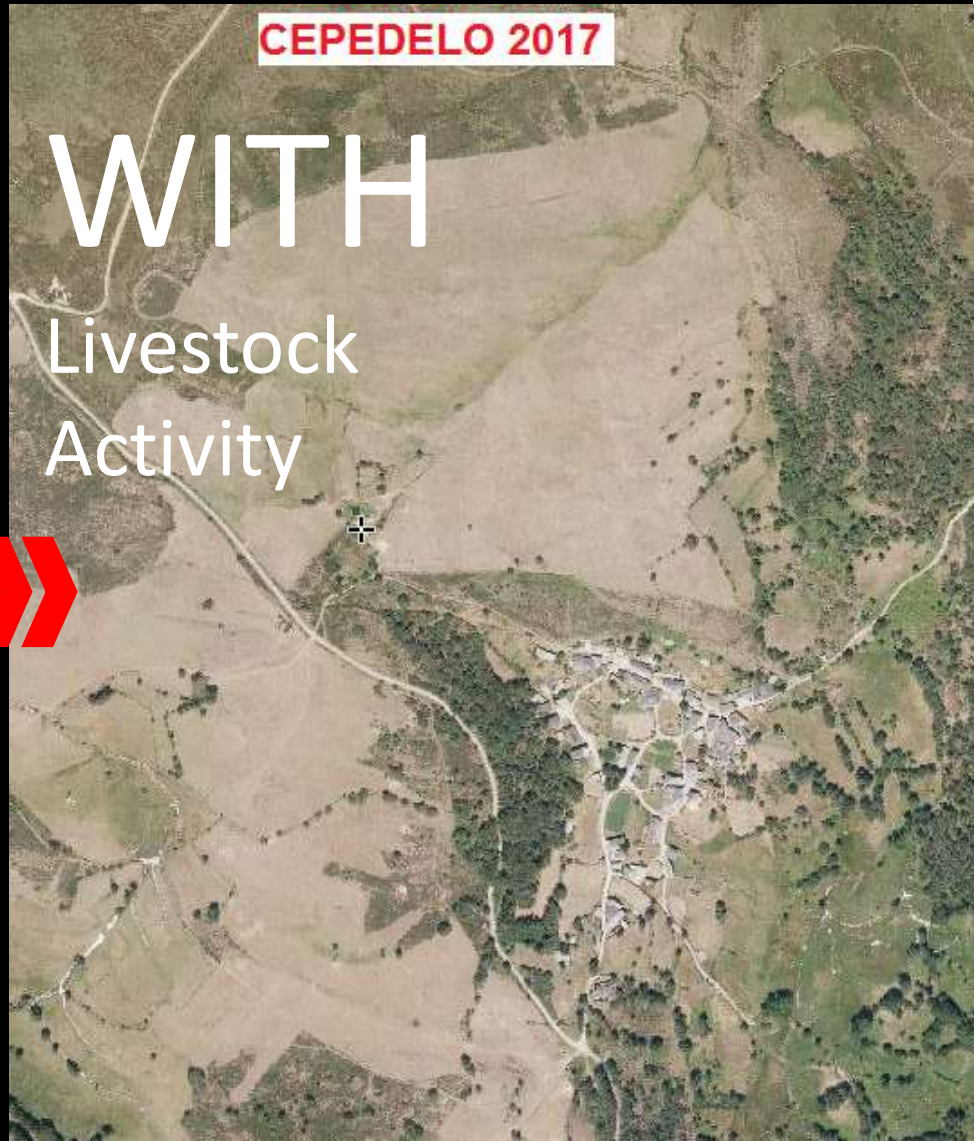
NO

Livestock
Activity

CEPEDELO 2017

WITH

Livestock
Activity



CAMBELA 2008

CAMBELA 2017



NO
Livestock
Activity

WITH
Livestock
Activity



NO

Livestock
Activity

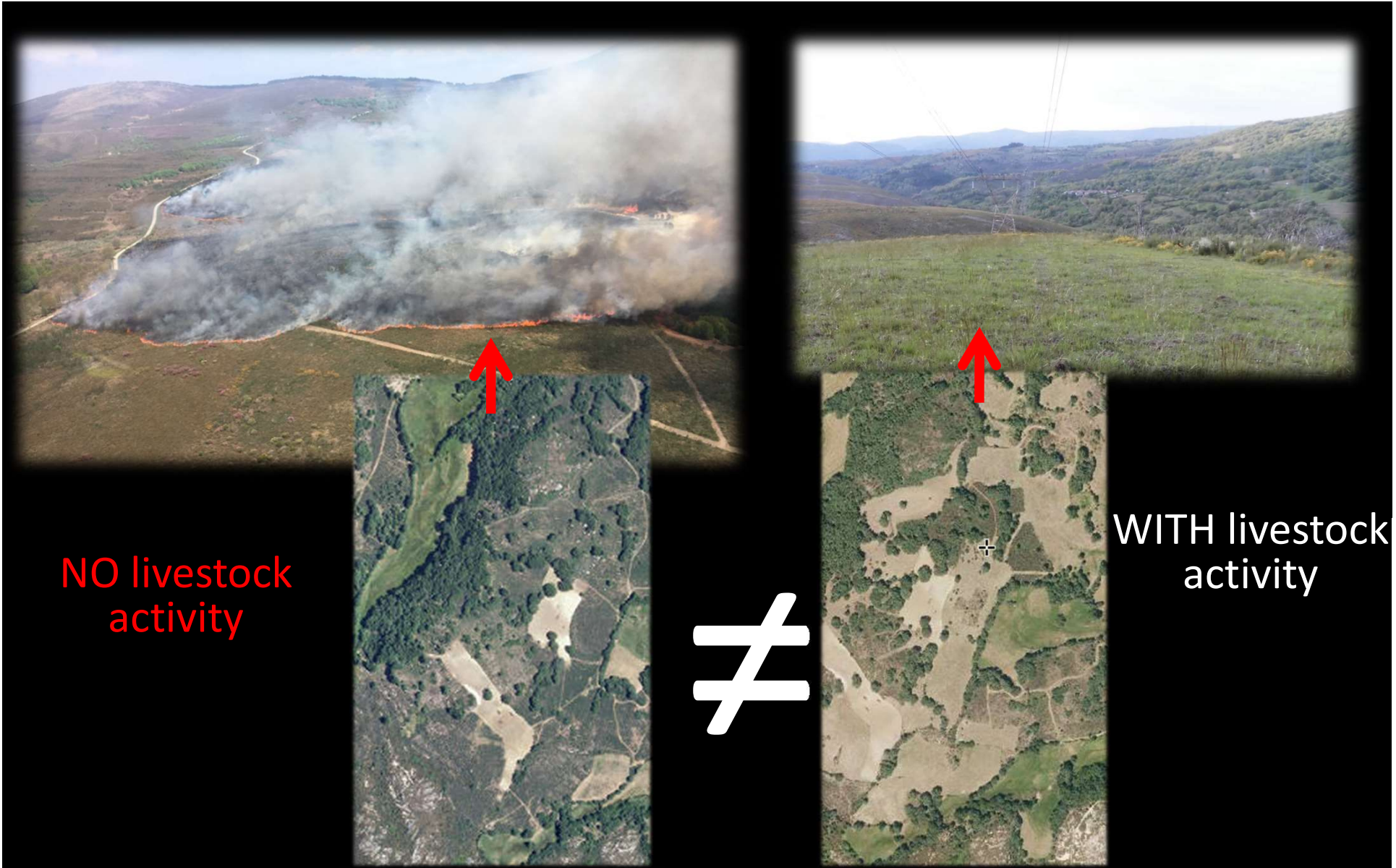
TUXE 2011

WITH

Livestock
Activity

TUXE 2017





NO livestock activity

≠

WITH livestock activity

... even so ...
the cattle ONLY DOES NOT keep



because
we need LIVESTOCK



WORK to SUSTAIN RURAL
ENVIRONMENT

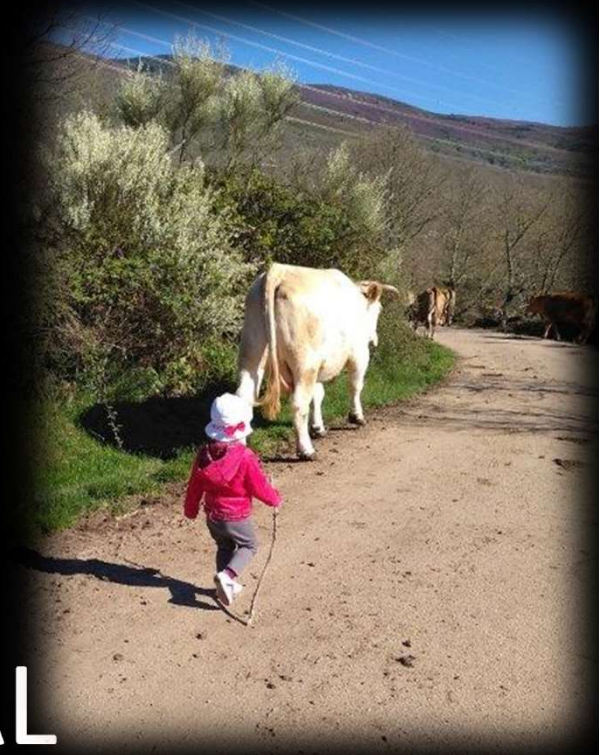


but ...

KEY FACTOR



GENERATIONAL
RELIEF



**EXTENSIVE LIVESTOCK that
manages and orders the
territory can be subject to an
ECOESCHEM**



But ...

NOT worth only with declare
pastures or even declare animals



It is **PRECISE** to properly manage the
forest, the meadows

Thus ... of the indicators of results proposed by the Commission, for this Ecosystem could be applied:



R12- Adaptación al CC

R29- Preserve the characteristics of the landscape

R27- Preservation of habitats and species

However, in NONE it appears as reference the N° of ANIMALS or LIVESTOCK LOAD



**NO LIVESTOCK, NO LIVESTOCK can not have
TERRITORY MANAGEMENT**



**It is necessary to RETURN the INDICATORS and INCLUDE
the TRUE SUSTAINABILITY AGENTS: the COWS, the SHEEP,
the GOATS, the HORSES, the IBERIAN PIGS ...**