



DL NPO

TELEPHONES OF INTEREST:

- City Council of Binéfar: 0043 974 42 81 00
- City Council of Zaidín: 0034 974 47 80 00

NATURE TRAIL SIERRA DE SAN QUÍLEZ



Guide to the
Nature Trails
of Spain



SECTOR
NORTHEASTERN PENINSULAR



LEGEND OF MIRACLOUS RAINFALL IN A CULTIVATED LANDSCAPE

The Sierra de San Quílez Nature Trail is located in the province of Huesca, in the county of La Litera. It starts in the municipality of Binéfar and continues for eight kilometres until the Zaidín Canal. The itinerary passes by two roads that act as a communication axis between the most highlighted interest points in the municipality and invite the traveller to discover the rich biodiversity in this agricultural region.



SECTOR NORTHEASTERN PENINSULAR NATURE TRAIL SIERRA DE SAN QUÍLEZ

LA SIERRA DE SAN QUÍLEZ STRETCH

- 1a.** The start of the nature trail is found next to the town of Binéfar, after passing under the A-22 motorway by the Camino del Pueyo, on a roundabout next to the N-240 road. For some hundreds of metres, the trail passes along the side of the road, which should remain on your left, before turning off by a track that lies on the right. The track leads towards the A-140 motorway but before reaching the road, take the next track to the right, steering towards the San Quílez hills.
- 1b.** From this point it advances into an agricultural environment, ignoring the turning on the right and continuing straight ahead, between holm oaks, almond groves and vegetable patches. After, the trail continues along a gravel track until the trail brings you to the Zaidín Canal.
- 1c.** Once you reach the bridge over the canal you need to cross it and turn to the left to start the ascent to the observation point on the San Quílez mountain range and the San Quílez Shrine. The track passes between Aleppo pines, trees extraordinarily adapted to the climate of the region, until reaching the San Quílez viewpoint.
- 1d.** From this vantage point, the visitor can enjoy marvellous views of the valley. A short while after you find yourself at the San Quílez Shrine, which the locals visit as part of a popular pilgrimage every Easter Monday. From there it is possible to enjoy a spectacular panoramic view of the western section of the mountain range. By

continuing ahead there is a recreational area with tables and swings, which enables the walker to take a break once they have read the information panels to learn a few more secrets about the natural environment in the area. A few metres away you reach a car park where there is a beautiful holm oak tree, and leave at one side a track that descends directly to the canal.

1e. The route continues until it widens and converges with a track leading to the left. On this site there is an olive tree, symbol of the work of reforestation by the associations and neighbours of Binéfar, as Félix de Azara, National Environment Prize Winner in 2001, explains on a commemorative plaque. On the left you reach a small house with a barbecue and a water fountain (untreated water), from where there is a good panoramic view of the surrounding area.

1f. After getting back on the road and continuing ahead, the track ends after less than a kilometre, upon reaching a track that directly descends towards the Zaidín Canal, from where you can access the branch of the road that passes parallel to it.

THE ZAIDÍN CANAL STRETCH

2a. This second stretch starts on the bridge over the Zaidín Canal, after crossing it you turn to the right by the track delimited by a wooden fence protecting the traveller from the proximity of the water.

2b. Keeping the course of the canal always on the right, the track continues by a rural landscape of olive trees and corn fields, passing various walkways that must not be crossed. At the end of the fence the track ascends from the left hand side to mark the end of this stretch of the walk.

LA VIRGEN DEL ROMERAL

In 1690, as a consequence of a devastating and prolonged drought, the region of Binéfar suffered a large period of scarcity and hunger. This period was so hard that the inhabitants of the locality prayed for mercy, praying that rain would alleviate the parched fields. The chronicles of the time state that the Virgen del Romeral, seeing how devoutly and insistently the locals prayed, granted a downpour that was sufficient to recuperate the damaged harvests. The town of Binéfar vowed to visit the Virgen del Romeral in the shrine of San Quílez every 7 May from then on, to give thanks for her mercy and celebrate the start of the traditional rain season.



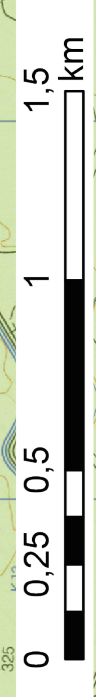
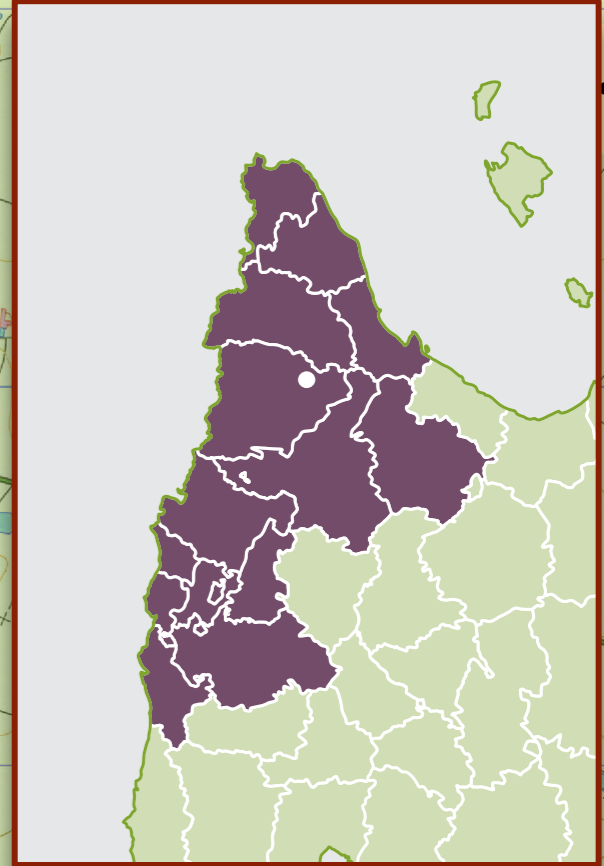
Detail of fruit from hawthorn
(*Rhamnus lycoides* var. *velutina*)



Bridge over the Zaidín Canal



Views from the trail



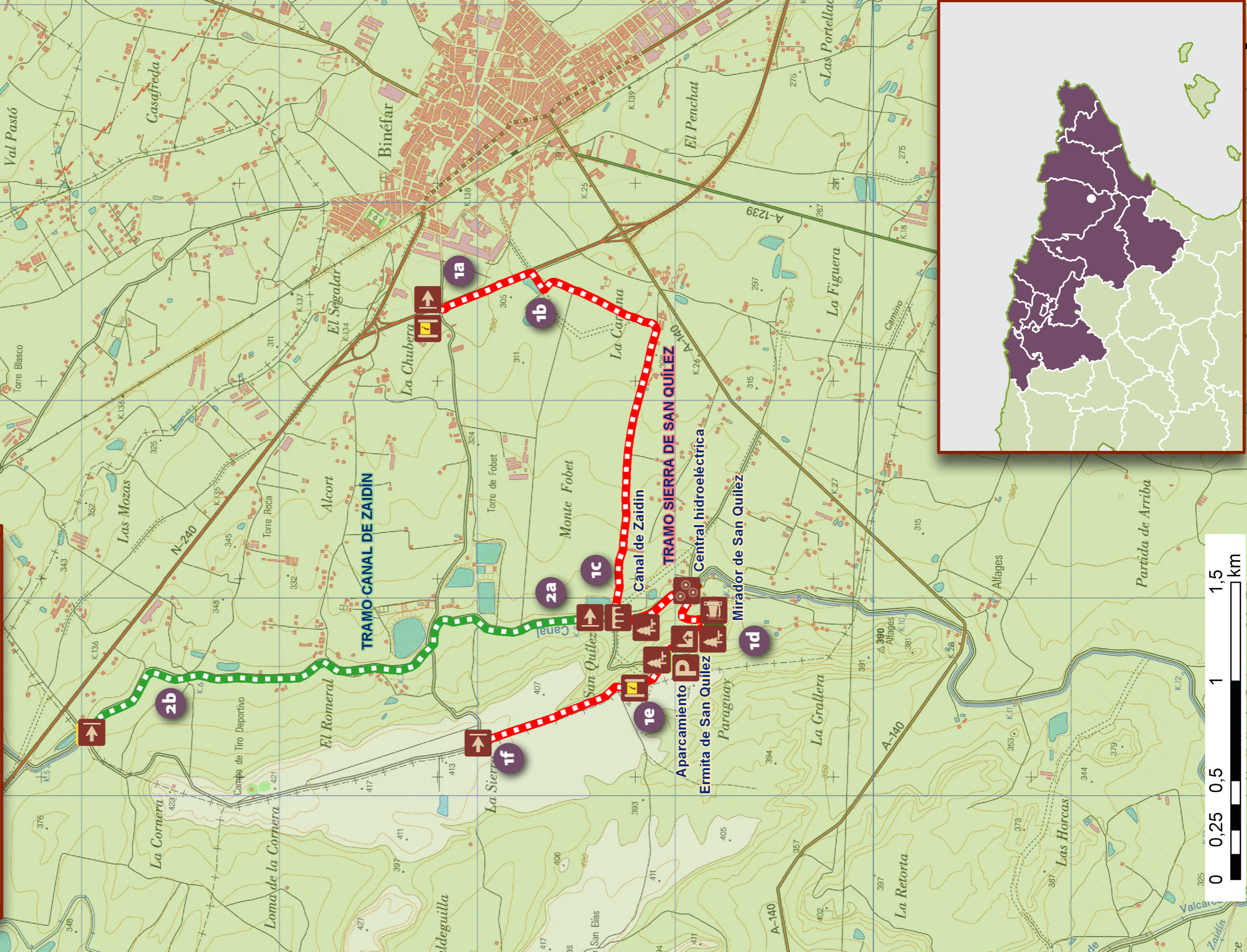
MIDE

Harshness of natural environment 1	▲	Upward gradient	120 m
Guidance along the route	3	Downward gradient	0 m
Route difficulty	1	ROUTE LENGTH*	7.9 km
Amount of effort needed	2	TIME*	3 h

* Length and time including both sections

◆ town ● point of interest

Binéfar



SECTOR
NORTHEASTERN PENINSULAR



NATURE TRAIL
**SIERRA DE
SAN QUÍLEZ**

- Starting point
- End of trail
- Train station
- Rest area
- Religious building
- Walkway
- Junction
- Bridge
- Underpass