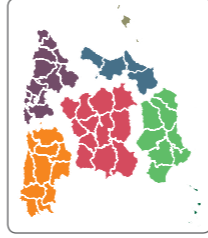




DL NPO

# NATURE TRAIL LA SAFOR



## SECTOR EASTERN PENINSULAR

### SECTOR EASTERN PENINSULAR NATURE TRAIL LA SAFOR

1. The starting point of the route is the town of Gandía, alongside the Parc de l'Estació, where an old restored locomotive can be found on display as a piece of street art.
2. After crossing the street, behind the Tourist Office there is a wide pedestrian avenue lined with trees on both sides and with a bicycle track and pedestrian walkway. Following this route and after crossing a pass for the Nature Trail, we reach a cross from where we can see a stone wall that runs as far as a bridge over the River Serpis. Once over the bridge, continue straight on through the roundabout in the direction Oliva.
3. During the following section, the road to Bellreguard is visible as it gradually turns off to the right. Further on, there are several examples of drainage infrastructure for the plots of orange groves.
4. Following the route, we reach a small bridge with a metallic rail that allows us to leave the road that links the town of Bellreguard with the residential complexes and the beach. The route continues straight along a comfortable stretch before reaching another bridge which crosses the main drainage canal which harnesses the waters of the River Serpis. At this point, there is dense vegetation of reeds, indicating the plentiful presence of water on the land.
5. Along the route, before reaching the underpass that crosses the road to Piles, there are a number of attractive poplars that invite the traveller to take a short rest in their shade.



Old locomotive beside the Parc de l'Estació

Since 1993 the Ministry for Agriculture and Fisheries, Food and the Environment's Nature Trails Program aims to restore former transport infrastructures such as railway tracks, cattle trails and traditional routes, for public use and enjoyment. These routes take us to the countryside to discover the biodiversity and beauty of our precious natural heritage, and discover the villages, sights, traditions and people that are part of the unique cultural landscape of our country. We invite you to visit them and offer you the keys to enjoy the trip. In this brochure you will find a brief description of La Safor Nature Trail section and the map for the journey, along with recommendations to make the most of this experience. We only ask one thing of you: do not forget to leave everything as you found it. The conservation of these pathways is also your responsibility.

- TELEPHONES OF INTEREST:**
- Gandía Town Council: 0034 962 95 94 00
  - Oliva Town Council: 0034 962 85 02 50

The route then continues in a straight line until it reaches another poplar grove where, once again, one can pause before continuing along a straight and comfortable route.

6. The trail continues in the direction of Oliva which just comes in to view on the horizon. There the route ends, although the visitor(s) may continue their walk to the beach of Oliva or head for the nearby Pego-Oliva Marshland Natural Park.

### THE PEGO-OLIVA MARSHLAND NATURAL PARK

This Natural Park is located on the Valle de Pego coast, between the mountains of Mostalla and Segaria, where the rivers Bullent-Vedate and Racons Molinell begin.

It is suggested that visitors to this Natural Space bring binoculars and a bird guide, as one can identify many of the bird species associated with this wetland area.

### THE FALLES OF GANDÍA

The *Falles* of Gandía (16-19 March), which have been awarded the National Tourist Interest status, are traditional celebrations with more than one hundred years of history and which come from the Arab tradition with regard to fires, and possibly initiated by the Christian carpenter guilds on the eve of St. Joseph, when they used to burn their wood chips, shavings and sawdust in bonfires. In any case, the old *Falles* celebrations did not have the critical and mocking spirit of the colossal constructions that occupy the streets of the municipality today.



Traditional bonfire

### A WALK THROUGH CANALS AND ORANGE GROVES



The La Safor Nature Trail is located in the province of Valencia. At six and a half kilometres long, it links Gandía to the town of Oliva. It runs along the old Carcaixent - Dénia railway line, considered one of the oldest narrow gauge railway lines on the Iberian Peninsula, which began operations in 1864 using animal traction, due to the increase in commerce in the orange and silk trades.

Nowadays, the *Falles* boast the essential participation of a great number of citizen associations, which meet together in the different districts and prepare different cultural activities throughout the year. Each of these associations appoints its own queen, selected at the beginning of the celebration.

After the election of the *Reina fallera* (queen representing the association), she is introduced and then the *Crida* (the act where the queen declares the start of the festival) and a parade is held and traditional *Albaes* are sung. An exhibition shial also follow of the *Ninot* Indultat, where each association presents a puppet of the for the children's falls and another for the main *fallas* (Falla Mayor). The winner will be the only puppet which will not be burnt during St. Joseph's night.

The *Plantà*, or collocation, of the *fallas* is held during the night of the 15th of March, which opens the celebrations. At 8 o'clock in the morning on the 16th of March the *Desperta* awakens the city and urges people to go out and visit the newly planted *fallas*, which can be visited from that moment on.

The celebration ends on the 19th of March, St. Joseph's day, the patron saint of Valencia. The different associations of the *fallas* usually celebrate a mass in honour of the saint patron and, at night, the long awaited *Cremà* of the *fallas* is celebrated, when this impressive works of arts are finally burnt.



Flora along the route: *Cipripedium* sp.

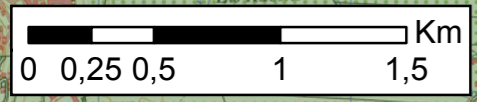
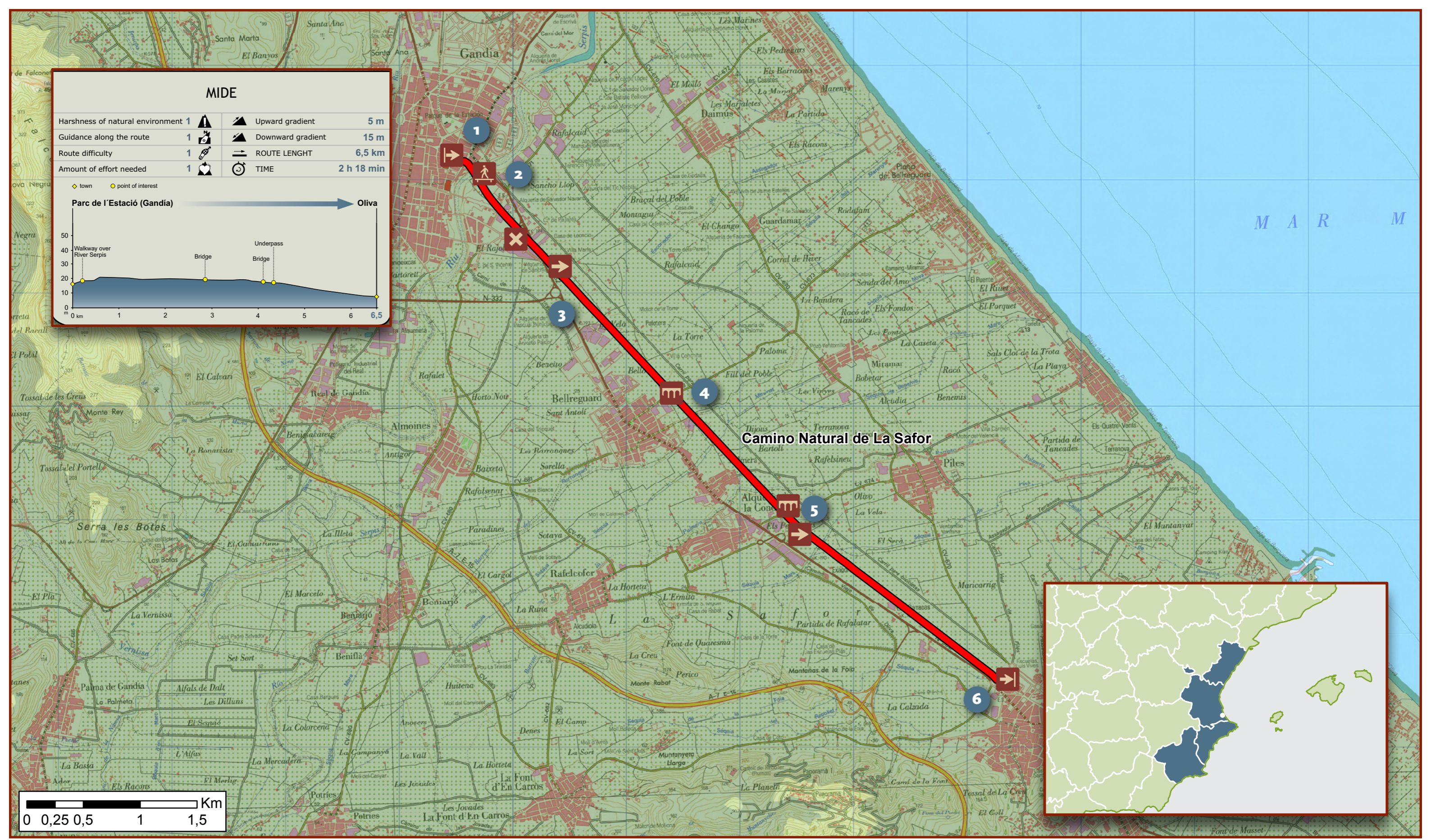


**MIDE**

Harshness of natural environment	1	▲ Upward gradient	5 m
Guidance along the route	1	▼ Downward gradient	15 m
Route difficulty	1	≡ ROUTE LENGHT	6,5 km
Amount of effort needed	1	⌚ TIME	2 h 18 min

◆ town    ● point of interest

**Parc de l'Estació (Gandía) → Oliva**



SECTOR  
**EASTERN PENINSULAR**



NATURE TRAIL  
**LASAFOR**

- Starting point
- End of trail
- Junction
- Bridge
- Underpass
- Walkway