



SECTION

TRINITARIOS

NATURE TRAIL PLAZAOLA.



Guide to the
Nature Trails
of Spain

SECTOR NORTHEASTERN PENINSULAR NATURE TRAIL PLAZAOLA. TRINITARIOS SECTION

The starting point of this route is in Parque Biurdana, at the end of the park at the roundabout on the street of the same name and beside the junction with the road to the San José Cemetery. An information panel close to the River Arga, in the area known as Trinitarios, marks the starting point of the trail.

1. The first section follows a red coloured pavement and is lined with walls or fences that separate the different public facilities, before reaching an underpass under Avenida de Guipúzcoa.
2. To the left, the path descends a hill towards the Argá's fluvial plain. From here, one can see the Residencia de Oblatas and the neighbourhood of La Rochapea.
3. A little further on is a tunnel which was once part of the original railway line. After passing through the tunnel, the trail reaches the Plazaola Bridge which takes its name from the old railway line between Pamplona and San Sebastián. The original metal bridge was built in 1910 but was washed away when the River Arga burst its banks in the early 1930s. It was subsequently replaced by the current bridge, from which we can see the Oblatas Bridge.

From here, the recent regeneration of the old railway line as a cycle land and pedestrian path allows us to continue as far as the exit from the city before crossing under the Ronda Norte ring road.



Oblatas Bridge

TELEPHONES OF INTEREST:

- Pamplona City Council: 0034 948 42 01 00
- Pamplona Tourist Office: 0034 848 42 04 20

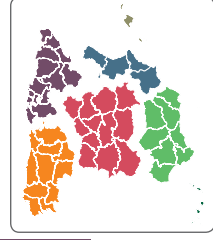
DE

NPO

These routes take us to the countryside to discover the biodiversity and beauty of our precious natural heritage, and discover the villages, sights, traditions and people that are part of the unique cultural landscape of our country. We invite you to visit them and offer you the keys to enjoy the trip. In this brochure you will find a brief description of Plazaola Nature Trail. Trinitarios section and the map for the journey, along with recommendations to make the most of this experience. We only ask one thing of you: do not forget to leave everything as you found it. The conservation of these pathways is also your responsibility.

A WALK THROUGH PAMPLONA'S GREEN AREAS

This section of the Plazaola Nature Trail begins in Biurdana Park, one of the green spaces located along the banks of the River Arga, which crosses the city of Pamplona (Navarra). The route, approximately a kilometre long, ends in Parque Larraina. This short trail is a pleasant walk through the city that can boast more trees and square metres of green space per inhabitant than any of Spain's regional capitals.



SECTOR NORTHEASTERN PENINSULAR

PAMPLONA RIVERSIDE PARK

The River Arga is a tributary of the River Aragón which is itself a tributary of the Ebro. Its course forms meanders that twist towards and away from the city of Pamplona, making for a walk that can boast some marvellous landscapes.

Pamplona Riverside Park, with an area of one million square metres, is one of the city's most important green areas.

The Park runs parallel to the river and past its most important historic bridges, including those of La Magdalena, San Pedro (the oldest in Pamplona), Rochapea and Santa Engracia.

PAMPLONA (IRUÑA)

Pamplona is the nerve centre of the Comunidad Foral de Navarra. The city boasts an important historic legacy that is not to be missed.

In addition to the monuments of the historic centre, which is also a stop on the Camino de Santiago, the Plaza del Castillo and Plaza de la Ciudadela stand out for their many emblematic buildings such as the Palace of Navarra, the Cathedral, the churches of San Nicolás and San Saturnino, the Museum of Navarra, the Oteiza Museum, the General Archive of Navarra, the Gardens of La Taconera, the Baluarte,



The old Pamplona railway station building

the Planetarium, the two university campuses, the City Hall and the Parliament.

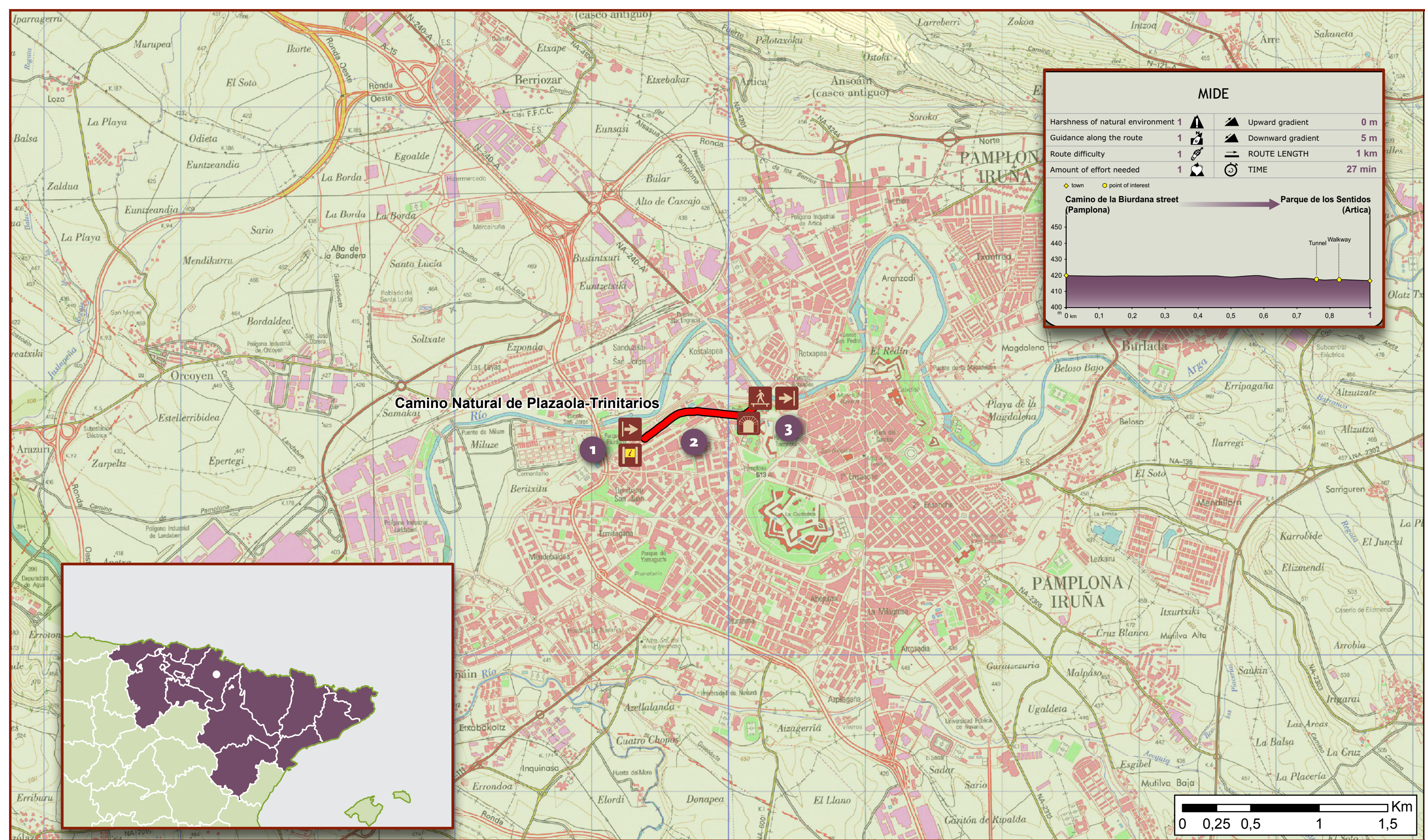
NOÁIN

Even though the city of Pamplona serves as a hub of the area, the neighbouring villages are full of history and magic. Noáin is barely 15 minutes away from Pamplona by car, and all travellers worthy of this name should always go all over its wonderful historic centre; visit the Church of San Miguel Arcángel and stop at the Parque de los Sentidos (Park of the Senses). This park, as suggested by its name, has been inspired by the senses and its area (25,000 m²) is divided into five spaces, each of them with a different decor. The park also boasts a central lake and a viewpoint from which the travellers may enjoy a wide panoramic view of the landscape.

The Noáin aqueduct is another great attraction of this city. The works were carried out between 1783 and 1790 for bringing drinking water to the city of Pamplona. The aqueduct, which is nearly 17 km long, starts at the Subiza spring and ends in Pamplona, running along another spots in Tajonar, Badostáin and Medillorri. It once was a 1,245 metres long aqueduct over 97 stone and brick arches, of which 94 are preserved today and it has columns reaching up to 18 metres in height and a channel on the top. Its most emblematic part is located in the municipality of Noáin.



River Arga from Plazaola bridge



SECTOR
NORTHEASTERN PENINSULAR



NATURE TRAIL
**PLAZAOLA.
TRINITARIOS
SECTION**

- ➔ Starting point
- ➔ End of trail
- 📄 Information panel
- 🚶 Walkway
- 🏠 Tunnel

